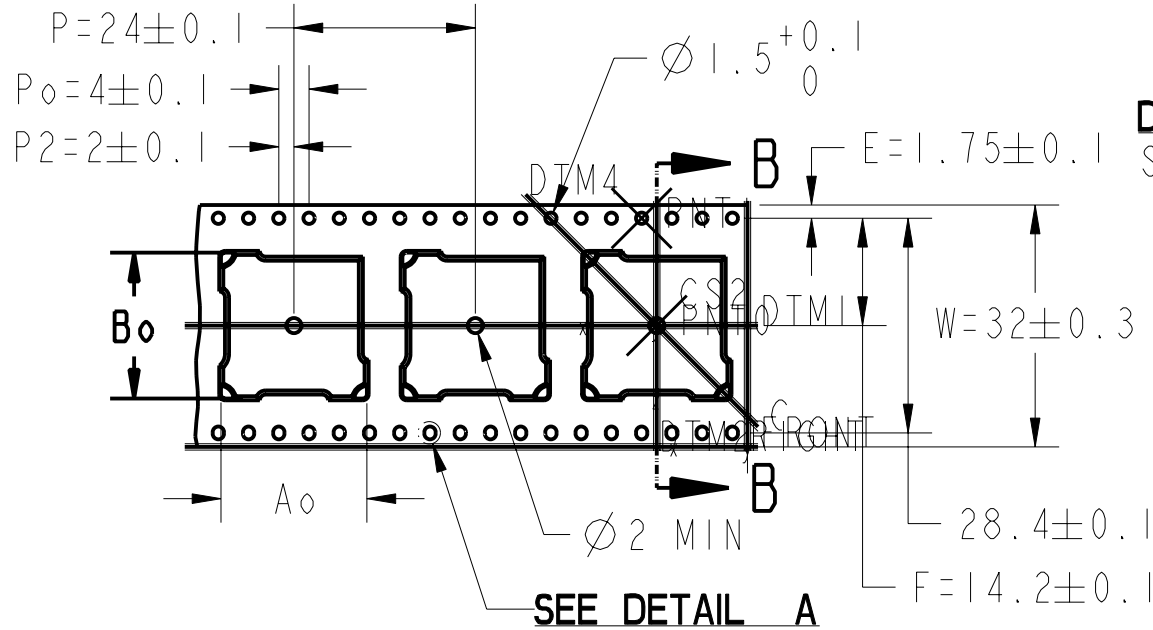
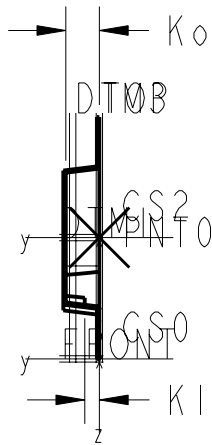


SECTION B-B



DETAIL A
SCALE 4.000

NOTES:

1. EIA-481 STANDARDS APPLY
2. POCKET POSITION RELATIVE TO SPROCKET HOLE MEASURED AS TRUE POSITION OF POCKET, NOT POCKET HOLE
3. $P10 = P_0 \times 10$
4. DIE # WD20460

A ₀	19.300 [0.760]
B ₀	19.300 [0.760]
K ₀	4.440 [0.175]
K ₁	1.930 [0.076]

TOLERANCES UNLESS OTHERWISE SPECIFIED	DRAWN BY K. WAGNER	DATE 27-Feb-03
±	CHECKED BY .	DATE .
±	DESIGNED BY .	DATE .
±	APPROVED BY .	DATE .
±	--- CONFIDENTIALITY ---	
DRAFT UNLESS NOTED: 0.5°	THIS DRAWING IS HEREBY DESIGNATED AS CONFIDENTIAL. INFORMATION ON IT IS PROPRIETARY Accutech AND SHALL NOT BE USED OR DISCLOSED TO THIRD PERSONS EXCEPT IN CONFORMITY WITH Accutech WRITTEN CONSENT.	
± 0.5°	UNLESS OTHERWISE NOTED: ALL DIMENSIONS AND TOLERANCES PER ASME Y14.5M-1994 AND Accutech DRAFTING STANDARD NO. 1.0000.	
ALL DIMENSIONS ARE IN MM		
SCALE: NTS		
SHEET OF 1		

		A SIZE APPD. BY
THIRD ANGLE PROJECTION		X-1402 ECO NO. REV. B
TITLE/DESCRIPTION TAPE - CARR 5051-59 32mm		
PART NO./I.D. NO. CT00172-G-A0045		
MATERIAL/MOLD NO. STATIC DISSIPATIVE POLYSTYRENE		
DRAWING NO. 01-020961		